

TO BE USED WITH SCREW TYPE CAPACITORS

THREAD	DESCRIPTION	Ø	h	H	D	ORDERING CODE
M12	NUT S17 STANDARD	17	1.3	18	28	240000000000000001
M12	NUT S22	22	1.3	18	28	240000000000000003
M8	NUT M8	18	1.3	18	28	240000000000000004
M8	FLAT WASHER					240000000000000005
M12	FLAT WASHER					240000000000000006

INSULATED MOUNTING WITH HEX NUT

Hex nuts and spring washers are delivered loosely with the capacitor.  
Insulation washers shall be ordered separately.

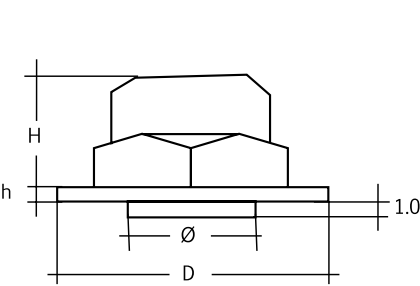
FEATURES

Insulated nylon hex nut and nylon washer and cap nut to be mounted on capacitor with M8 and M12 mounting stud.

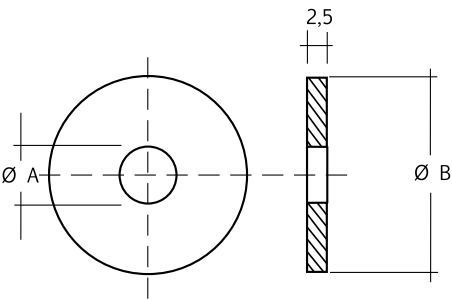
MOUNTING GUIDE

Mounting stud has the same potential as the negative terminal.  
Pay attention to any relevant regulations (e.g. VDE, BSA or UL).

M	A	B
M8	8.4	24
M12	12.5	34



HEX NUT



FLAT WASHER